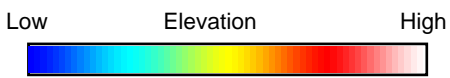
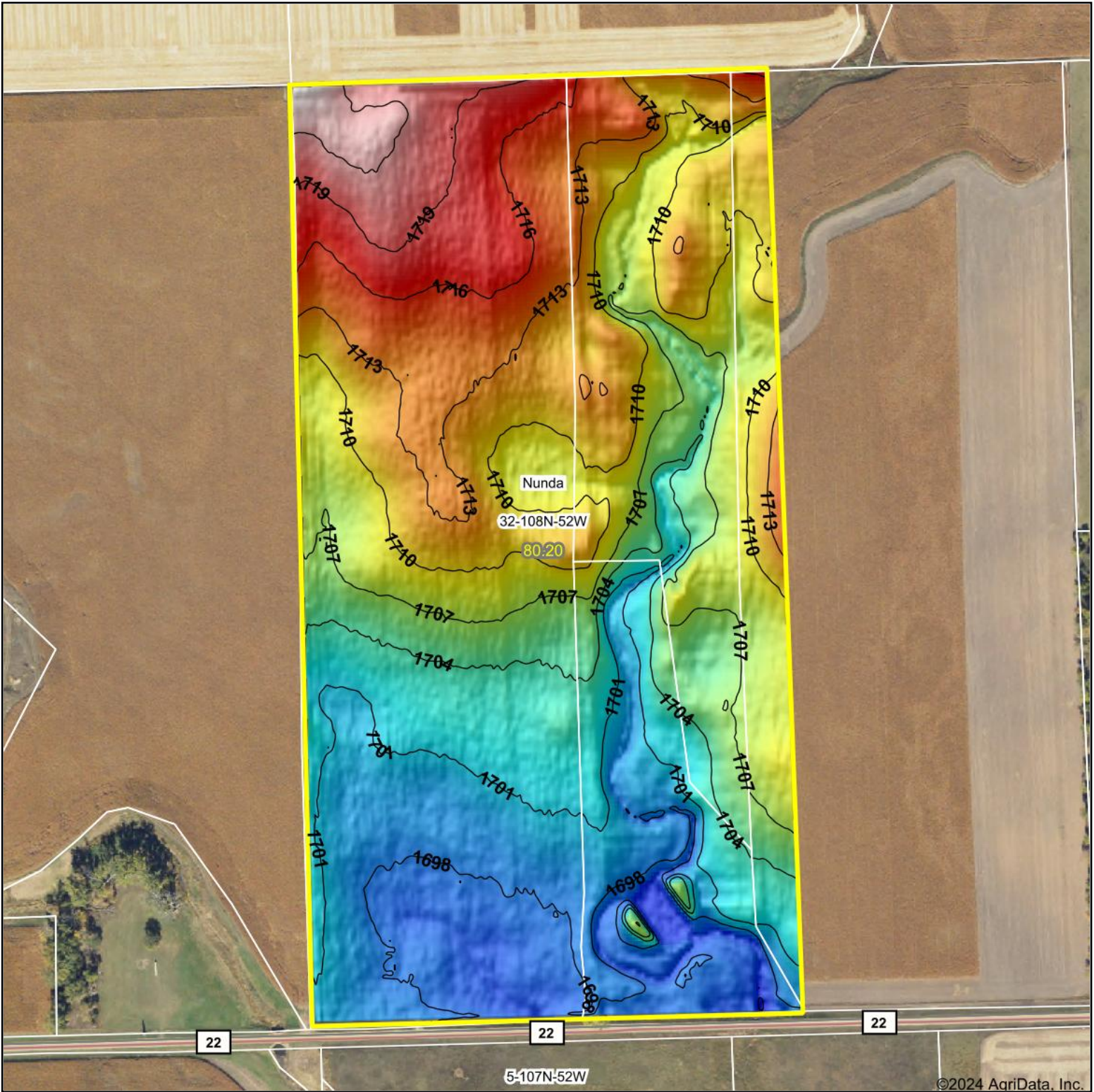
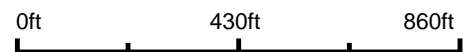


Topography Hillshade



Source: USGS 3 meter dem
 Interval(ft): 3
 Min: 1,694.6
 Max: 1,724.5
 Range: 29.9
 Average: 1,707.3
 Standard Deviation: 6.73 ft



12/26/2024

32-108N-52W
Lake County
South Dakota

Boundary Center: 44° 6' 45.93, -97° 5' 49.96

Maps Provided By:



© AgriData, Inc. 2023 www.AgriDataInc.com

Field borders provided by Farm Service Agency as of 5/21/2008.

©2024 AgriData, Inc.