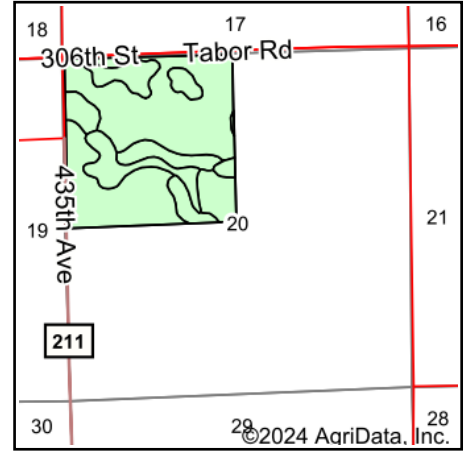
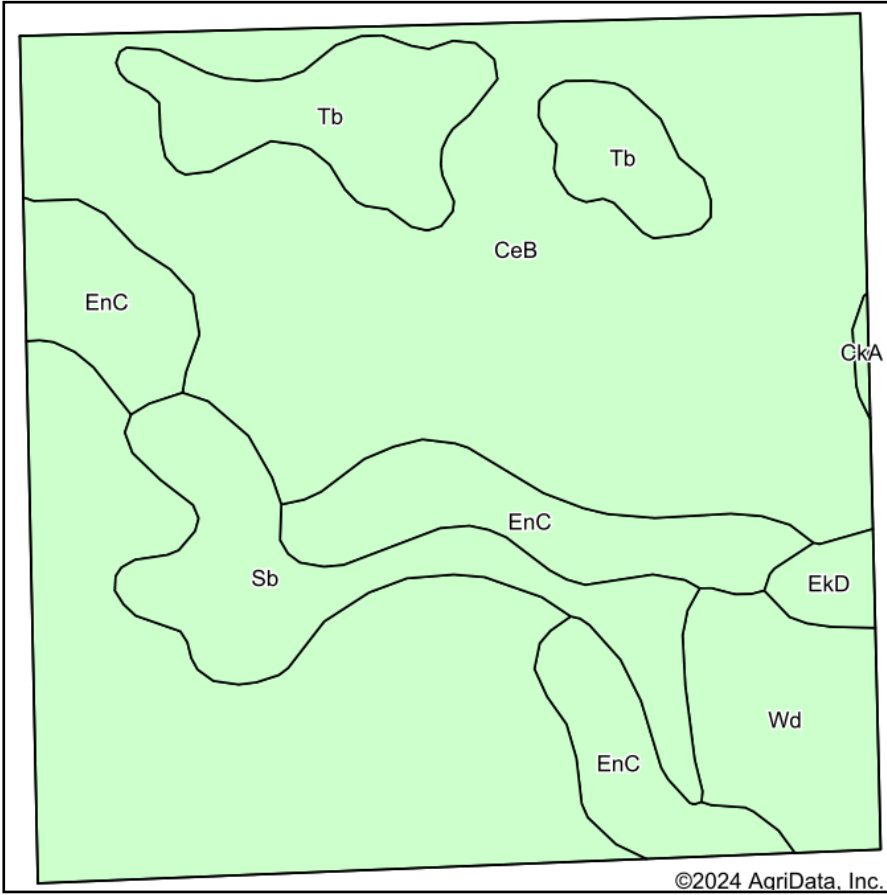


Soils Map



State: **South Dakota**
 County: **Yankton**
 Location: **20-94N-56W**
 Township: **Utica**
 Acres: **155.44**
 Date: **4/15/2024**

Maps Provided By:

 CUSTOMIZED ONLINE MAPPING
 © AgriData, Inc. 2023 www.AgriDataInc.com



Soils data provided by USDA and NRCS.

Area Symbol: SD135, Soil Area Version: 25

Code	Soil Description	Acres	Percent of field	PI Legend	Non-Irr Class *c	Productivity Index	Alfalfa hay Tons	Bromegrass alfalfa AUM	Corn Bu	Oats Bu	*n NCCPI Soybeans
CeB	Clarno-Bonilla loams, 1 to 6 percent slopes	99.84	64.2%		Ile	84					64
EnC	Clarno-Ethan-Bonilla loams, 2 to 9 percent slopes	19.06	12.3%		IIle	69					61
Sb	Salmo silty clay loam	13.11	8.4%		IVw	38	2.6	4.3	40	47	25
Tb	Tetonka silt loam, 0 to 1 percent slopes	12.24	7.9%		IVw	56					14
Wd	Worthing silty clay loam, 0 to 1 percent slopes	9.14	5.9%		Vw	30					4
EkD	Ethan stony loam, 3 to 25 percent slopes	1.75	1.1%		VIIIs	1					27
CkA	Clarno-Crossplain-Davison complex, 0 to 2 percent slopes	0.30	0.2%		IIc	82					55
Weighted Average					2.68	72	0.2	0.4	3.4	4	*n 52.4

*n: The aggregation method is "Weighted Average using all components"

*c: Using Capabilities Class Dominant Condition Aggregation Method

Soils data provided by USDA and NRCS.